

# CLASSIC® 8 RETAINING WALL

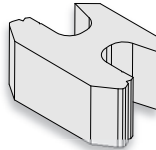
**ROCKWOOD®**  
RETAINING WALLS  
*A better way.™*



- Strong and versatile, efficient to build systems
- Matching base, corner and half blocks
- 1.0" setback, adjustable to near vertical
- Cap with 4" Universal or Chiseled Cap

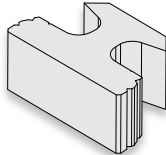
## Beveled-Split Colors:

- Gray
- Sandstone



## Straight-Split Colors:

- Charcoal
- Gray (base block only)
- Sandstone
- Sandstone/Brown



Refer to actual product samples when making color selection.



Classic 8 Blocks	Size	Face Area	Weight	Units/Layer	Layers	Units/Pallet	Pallet Weight
Straight Face	18 x 12 x 8" H	1 sq. ft.	85 lbs.	12	2	24 (24 sq. ft.)	2,090 lbs.
Straight Base (gray only)	18 x 12 x 8" H	1 sq. ft.	85 lbs.	12	2	24 (24 sq. ft.)	2,090 lbs.
Beveled Face	18 x 12 x 8" H	1 sq. ft.	79 lbs.	12	2	24 (24 sq. ft.)	1,946 lbs.
Half Block	9 x 12 x 8" H	0.50 sq. ft.	39 lbs.	12	1	12 (6 sq. ft.)	518 lbs.
Solid Corner Block**	18 x 9 x 8" H	1 sq. ft.	100 lbs.	5	4	20 (20 sq. ft.)	2,050 lbs.

\*\* Rochester and Beaver Dam only

Manufactured by:



7200 Broadway Ave. N, Rochester, MN 55906  
Phone: 507-288-8850 • Fax: 507-535-1487  
[www.rochestercp.com](http://www.rochestercp.com)

©Copyright 2020. All Rights Reserved. This information has been prepared for the benefit of customers interested in Rochester Concrete Products. It was reviewed carefully prior to publication. Rochester Concrete Products assumes no liability for its accuracy or completeness. Final determination of the suitability of any information or material for the use contemplated, or for its manner of use, is the sole responsibility of the user. 221

